



GREAT WINE TERROIRS



JACQUES FANET

Terroir: Myth or Reality	10
Continental Drift and the Origin of Terroirs	12
Going Back through Time: The Geological Eras	14

Vineyards on the Edges of Faults 23

Alsace	24
The Riesling	28
The Gewürztraminer	30
The Pinot Gris	32
Germany	34
Burgundy	36
The Côte de Nuits and the Côte de Beaune	38
The Pinot Noir	44
The Chardonnay	48
The Côte Chalonnaise	52
The Mâconnais	54
The Beaujolais Region	56
The Gamay Noir	60
The Northern Rhône Valley	62
The Syrah	66



Sedimentary Basins 69

The Paris Basin	70
Champagne and the Lorraine Vineyards	72
The Chablis and Auxerre Viticultural Areas	74
The Vineyards of Central France	76
The Sauvignon Blanc	78
The Touraine	80
Western Touraine and the Anjou Blanc Region	82
The Aquitaine Basin	84
Cahors and Gaillac	86
The Bergerac Viticultural Area	88
The Libourne and Entre-deux-Mers Areas	90
The Merlot	94
The Jurançon and Béarn AOCs	98
Jerez and the Vineyards of Andalusia	100
The Duero Valley	104
The Mediterranean Basin	108
The Limousin and Cabardès	110
The Corbières Region	114
The Minervois and Saint-Jean-de-Minervois	116
The Carignan	118
The Roussillon	120
The Muscat Blanc à Petits Grains	122
The Coteaux du Languedoc	124
Provence	126
The Mourvèdre	128
Tuscany and Central Italy	130
The Rhône Basin	134
The Southern Rhône Valley	136
The vineyards of the Pre-Alps	138
The vineyards of La Rioja and Navarre	140
The Italian Piedmont Region	144

Quaternary Terraces 149

The Médoc	150
The Cabernet Sauvignon	154
The Graves and Sauternes Areas	158
The Sémillon	162
The Pomerol Area	164
The Rhône Terraces from Châteauneuf-du-Pape to La Costière	166
The Grenache Noir	172

The Ancient Basement 175

The Muscadet	176
Anjou Noir and the Coteaux du Layon	178
The Chenin Blanc	180
The Port Wine Producing Area	182
The Vinhos Verdes Viticultural Area	186
South Australia	188
South Africa	192



Vineyards in the Foothills of Mountains 195

Savoie	196
The Jura	198
Chile: Vineyards in the Andes	200
Argentina: The Mendoza and Famatina Terroirs	204
California	208
Switzerland: The Vaud and Valais Cantons	212
The Chasselas	214
Corsica	216

Volcanic Terroirs 219

The Vineyards of the Côtes d'Auvergne	220
Hungary: From Tokaj to Lake Balaton	222
The Canary Islands	226
Brazil: The Serra Gaucha	228



Glossary	230
Index: Grape Varieties	235
Index: Regional	235

Continental Drift	12	The Village of Dezize-lès-Maranges	
Orogeny	14	Astride a Fault	43
France in the Jurassic Period	16	Northern Tip of the Mont-Saint-Vincent Horst	52
France in the Oligocene	18	Section of the Hill of Givry	53
France in the Late Miocene	19	The Côte Chalonnaise	53
France in the Pliocene	19	The Tilted Hills of the Mâconnais	54
Cuesta Formation in the Eastern Paris Basin	20	The Hills of the Mâconnais	55
Terrace Formation in the Quaternary Period	20-21	Geology of the Beaujolais (Map)	56
Faulting and Slope Formation	23	Geology of the Beaujolais Terroirs (Section)	58
		The Côte Roannaise	59
		The Chablis Vineyard	74
The Wine Terroirs of France			
Geological Map of France	8		
Viticultural Map of France	9		
Distribution of French Vineyards on Quaternary Terraces	148		
<hr/>			
ALSACE		THE LOIRE VALLEY AND CENTRAL FRANCE	
The Three Terroirs of the Alsatian Slopes	24	The Vineyards of Central France	76
Alsace Geology (Map)	25	The Saumur Viticultural Area	83
Alsace Viticulture (Map)	27	The Chouzé-sur-Loire Faulted Anticline	82
		The Limestone Cliff of Vouvray	80
		The Terroirs of Cheverny and Cour-Cheverny	81
		The Geological Formations of the Muscadet Region	177
		The Coteaux de Chaume and Bonnezeaux	178
		Terroir Formation of the Côtes d'Auvergne Vineyards	220
<hr/>			
CHAMPAGNE		THE BORDEAUX REGION	
Map Showing Vineyard Locations in the Concentric Bands of the Eastern Paris Basin	70	The Limestone Plateau of St.-Emilion, Located on Fronsadais Molasse	90
Section of the Montagne de Reims	72	Entre-Deux-Mers (Section)	93
Section of the Côte des Bars	73	Listrac and Moulis	152
		From Margaux to the Blaye Region	153
		The Pomerol Terraces at the Confluence of the Dordogne and the Isle	164
<hr/>			
BURGUNDY AND THE BEAUJOLAIS REGION		SOUTHWEST FRANCE	
Geological Overview of Burgundy and Beaujolais	36	Meanders of the Parnac and Luzech in the Cahors AOC	86
The Five Steps of Burgundy	37		
The Cote de Nuits, Côte de Beaune, and Hautes Côte de Beaune	38-39		
The Côte de Nuits: Gevrey, Vougeot, and Vosne-Romanée	40		
The Côte de Beaune: Aloxe-Corton, Volnay, and Puligny-Montrachet	41		

The asymmetric Tarn Valley between Gaillac and Rabastens	87
Monbazillac-Monbos in the Monbazillac AOC (Section)	88
Jurançon Plateau (Section)	99

THE RHÔNE VALLEY

The Geological Setting of the Northern Rhône Valley	62
The Hill of l'Hermitage (Section)	63
The Geological Setting of the Southern Rhône Valley	137
The Hills of Châteauneuf-du-Pape	166
The Southern Part of the Côtes-du-Luberon AOC around Mourre-Nègre, the Highest Point in the Grand Luberon	139

THE JURA AND SAVOIE

The Terroir of the Cru Aymes	196
The Original Location of the Jura Vineyards	199

THE LANGUEDOC AND THE ROUSSILLON

Arrangement of Tertiary Layers Overlaying the Ancient Basement in Cabardès and the Limousin	110
The Geological Jumble of the Corbières Region	114
The Minervois	116
The Remarkable Site of the Maury Vineyards	120
The Majestic Setting of the Pic-St-Loup Vineyards	124
The Costière de Nîmes	170

PROVENCE

The Range of Terroirs in Provence	126
-----------------------------------	-----

Wine Terroirs of the World

SOUTH AFRICA

The Cape Vineyards between the Ocean and the Great Escarpment	192
---	-----

AUSTRALIA

The Viticultural Areas of South Australia	188
---	-----

CHILE

Configuration of the Terroirs of Central Chile	200
--	-----

SPAIN

Distribution Area of the <i>Albarizas</i> and <i>Barros</i> Soils around Jerez de la Frontera and Sanlúcar de Barrameda	102
The Canary Island Archipelago (Section)	226

THE UNITED STATES

Formation of the Coast Ranges Region	208
--------------------------------------	-----

HUNGARY

The Southern Tip of the Zemplen Mountains and the Tokaj Vineyards	222
---	-----

ITALY

The Slopes of Montepulciano	132
-----------------------------	-----

PORTUGAL

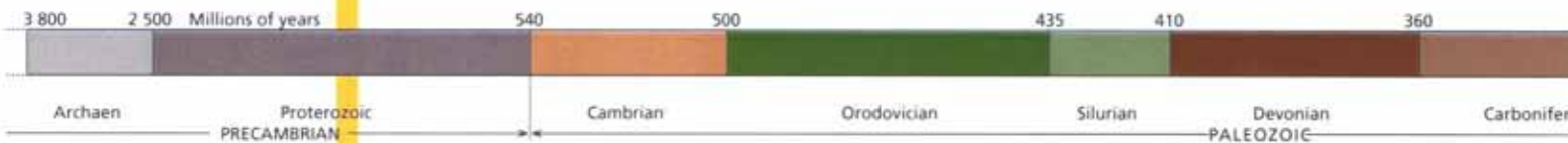
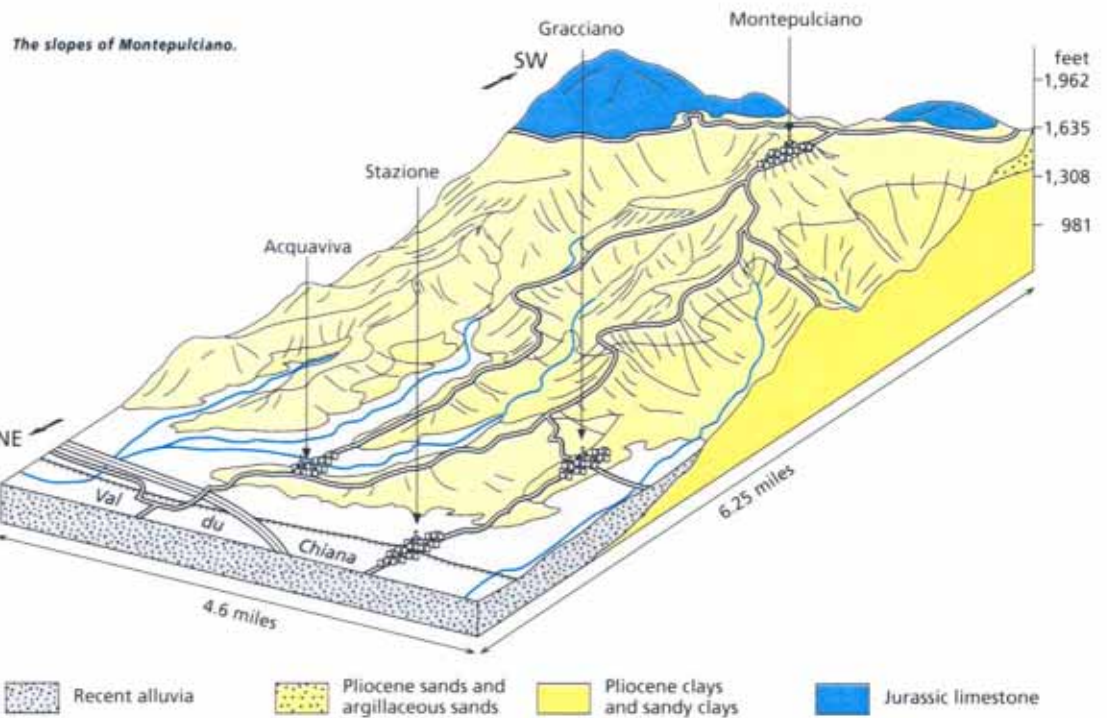
The Geology of the Port and Vinhos Verdes Viticultural Areas	187
--	-----



The vineyards of Castello Banfi, one of the largest estates in the Brunello di Montalcino appellation.



Vino Nobile di Montepulciano is produced on the valley slopes running from the magnificent hilltop village of Montepulciano toward the plain of Val di Chiana.





(Sauvignon and Franc) and the Merlot. The highest peak is Mount Calvo (2,740 feet) that dominates a verdant landscape of vineyards alternating with fields of crops and woods.

Vino Nobile di Montepulciano and Brunello di Montalcino

These two famous DOCGs (*Denominazione di Origine Controllata e Garantita*) lie south of Siena, where the climate is distinctly drier and even arid. Vino Nobile di Montepulciano, the longest established, is exclusively located in the commune of Montepulciano and in the flat part of the Val di Chiana beyond the railway line. The terroir surrounds the superb village of Montepulciano, perched on a promontory that extends north-south. It is predominantly composed of east-facing slopes of Pliocene sandy and argillaceous-sandy formations that rise 815-1,962 feet. Average annual rainfall is about 27 inches. The Prugnolo Gentile (Sangiovese clone), Canaiolo Nero, and Mammolo yield dark red, powerful, and tannic wines that need time to mature.

Brunello di Montalcino, a few miles farther west as the crow flies, covers a much wider area although still centered on the hilltop village of Montepulciano. The vineyards mainly lie on the south-facing, argillaceous-limestone slopes running down from the village to the River Orcia that marks the appellation's southern border. The Orcia discharges into the River Ombrone that borders the appellation to the west and north. This is a significantly drier region (average annual rainfall of 19 inches), exclusively planted to the Sangiovese, known locally as the Brunello. The wines are powerful and slow to open, in contrast to the less robust wines from the more recently established vineyards in the north and south of the appellation.

